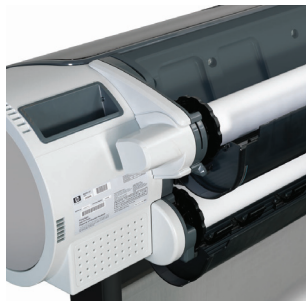


HP DESIGNJET T1300

ePRINTER SERIES



Easy and versatile ePrinter with two rolls



So easy and intuitive, you'll love using it

You'll love using this ePrinter. Its color touchscreen is intuitive. PDF creation is easy with optional AutoCAD plug-in. Print preview eliminates error and waste. And because the printer is Web-connected, it's easier than ever to update.

- Print to any HP Designjet printer without installing any drivers thanks to HP ePrint & Share.⁽¹⁾
- Discover the power of touch—this ePrinter's color touchscreen enables intuitive operation and page previews.
- Web-connected and easy to update. Software updates occur automatically, every six months.
- Create a print-ready PDF⁽²⁾ at the same time you print with HP ePrint & Share.⁽¹⁾

Do more in less time—fast setup, printing, sharing

Meet tight deadlines, work with many file types, and produce high-quality line drawings and presentations on one printer. Two rolls with smart switching fosters workgroup productivity. See rich, dark blacks, true neutral grays, vibrant solid colors.

- Save time and paper with two rolls. Load the printer with the same—or different—paper types and sizes.
- Get the job done quickly without sacrificing quality. Print up to 2 A1/D-sized prints per minute in Economode.
- Achieve high-quality results with rich, dark blacks, true neutral grays, and vibrant solid colors.
- Experience trusted security and manageability with features designed to protect and simplify.

Access and print files where the job takes you

Ultra mobile, this printer enhances collaboration. Print directly from your computer or USB drive without installing drivers. Web print directly from the color touchscreen. Share, access, and print files via the Web using HP ePrint & Share.⁽¹⁾

- Print TIFF, JPEG, and PDF⁽³⁾ files directly from your USB thumb drive; no computer required.
- Print and share files directly from the color touchscreen—with HP ePrint & Share.⁽¹⁾
- Select and print projects using the color touchscreen—simply access those files via HP ePrint & Share.⁽¹⁾
- Print remotely⁽⁴⁾ to any large-format HP Web-connected Designjet from your computer or mobile device.

⁽¹⁾ HP ePrint & Share is a free Web-printing solution that lets you automatically manage content online. It requires an Internet connection.
⁽²⁾ Requires AutoCAD plug-in.
⁽³⁾ PDF files only available with PostScript accessory (optional accessory to be purchased separately) or buying PS versions.
⁽⁴⁾ Remote Printing will be available by end of 2011.

ecoHIGHLIGHTS	HP DESIGNJET T1300 ePRINTER SERIES
<ul style="list-style-type: none"> • Save paper with automatic print settings and two-roll configuration • Less ink wasted due to efficient installation and maintenance routines • Free, convenient HP ink cartridge and printhead recycling⁽¹⁾ • Works with FSC⁽²⁾ and PEFC certified HP papers⁽²⁾ • ENERGY STAR⁽³⁾ qualified 	
<p>⁽¹⁾ Visit www.hp.com/recycle to see how to participate and for HP Planet Partners program availability; program may not be available in your area.</p> <p>⁽²⁾ See www.hp.com/go/HPmediaresources</p>	
<p>www.hp.com/ecosolutions www.hp.com/recycle</p>	<p>Please recycle large-format printing hardware and printing supplies. HP recycling services make it easy to dispose of products at end-of-use.</p>



HP DESIGNJET T1300 ePRINTER SERIES

TECHNICAL SPECIFICATIONS

PRINT

Line drawings ¹	28 sec/page on A1/D, 103 A1/D prints per hour
Color images ²	Fast: 41 m ² /hr (445 ft ² /hr) on coated media Best: 3.1 m ² /hr (33.3 ft ² /hr) on glossy media
Print resolution	Up to 2400 x 1200 optimized dpi from 1200 x 1200 input dpi and Optimization For Photo Paper selected
Margins (top x bottom x left x right)	Roll: 5 x 5 x 5 x 5 mm (0.2 x 0.2 x 0.2 x 0.2 in) (borderless on photo papers) Sheet: 5 x 17 x 5 x 5 mm (0.2 x 0.67 x 0.2 x 0.2 in)
Technology	HP Thermal Inkjet
Ink cartridge colors	Cyan (C), gray (G), magenta (M), matte black (mK), photo black (pK), yellow (Y)
Ink types	Dye-based (C, G, M, pK, Y); pigment-based (mK)
Ink drop	6 pl (C, G, M, pK); 9 pl (mK, Y)
Ink cartridge size	300 ml (mK) 130 ml (C, G, M, mK, pK, Y) 69 ml (C, G, M, pK, Y)
Printheads	3 (G & pK, mK & Y, M & C)
Line accuracy	+/- 0.1% ³
Minimum line width	0.02 mm (0.0008 in) (HP-GL/2 addressable)
Guaranteed minimum line width	0.06 mm (0.0024 in) (ISO/IEC 13660:2001(E)) ⁴
Maximum print length	91 m (300 ft) (OS and application dependent)

MEDIA

Handling	Sheet feed, two automatic roll feeds, automatic roll-switching, automatic cutter
Types	Bond and coated paper (bond, coated, heavyweight coated, super heavyweight plus matte); technical paper (natural tracing, translucent bond, vellum); film (clear, matte); photographic paper (satin, gloss, semi-gloss, matte, high-gloss); self-adhesive (polypropylene, vinyl)
Weight	60 to 328 g/m ²
Size	210 x 279 to 1118 x 1676 mm (8.26 x 11 to 44 x 66 in) sheets; 279 to 1118-mm (11 to 44-in) rolls
Thickness	Up to 0.8 mm (31.5 mil)

MEMORY

32 GB (virtual)⁵, 160 GB hard disk

CONNECTIVITY

Interfaces (standard)	Gigabit Ethernet (1000Base-T), Hi-Speed USB 2.0 certified, EIO Jetdirect accessory slot
Print languages (standard)	Basic ePrinter: HP-GL/2, TIFF, JPEG, CALS G4, HP PCL 3 GUI PostScript [®] ePrinter: Adobe [®] PostScript [®] 3 [™] , Adobe PDF 1.7, HP-GL/2, TIFF, JPEG, CALS G4, HP PCL 3 GUI
Print languages (optional)	Basic ePrinter: Adobe PostScript 3, Adobe PDF 1.7
Drivers (included)	HP-GL/2, HPRTL drivers for Windows [®] (optimized for AutoCAD 2000 and higher); HP PCL 3 GUI driver for Mac OS X; PostScript Windows, Linux, and Mac drivers ⁶

RECOMMENDED SYSTEM REQUIREMENTS

Mac	Mac OS X v 10.4, Mac OS X v 10.5: PowerPC G4, G5, or Intel Core Processor; 1 GB RAM; 2 GB available hard disk space
Windows	Windows XP [®] (SP2 or later); Intel [®] Pentium [®] family or AMD [®] K6/Athlon/Duron family (1 GHz), 1 GB RAM, 2 GB available hard disk space; Windows Vista [®] : 32-bit (x86) or 64-bit (x64) processor (1 GHz), 2 GB RAM, 2 GB available hard disk space

DIMENSIONS (w x d x h) AND WEIGHT

Printer	1770 x 721 x 1050 mm (69.7 x 28.4 x 41.3 in); 86 kg (189 lb)
Shipping	1930 x 766 x 770 mm (76 x 30.2 x 30.3 in); 109 kg (240 lb)

WHAT'S IN THE BOX

HP Designjet T1300 Printer, printheads, introductory ink cartridges, printer stand, spindle, quick reference guide, setup poster, startup software, power cord

ENVIRONMENTAL RANGES

Operating temperature	5 to 40°C (41 to 104°F)
Storage temperature	-25 to 55°C (-13 to 131°F)
Operating humidity	20 to 80% RH
Storage humidity	0 to 95% RH

ACOUSTIC

Sound pressure, active/standby	46 dB(A)/29 dB(A)
Sound power, active/standby	6.3 B(A)/4.4 B(A)

POWER

Printing	< 120 watts
Powersave	< 7 watts (< 25 watts with embedded Digital Front End)
Off	0.1 watts
Requirements	Input voltage (auto ranging) 100 to 240 VAC (+/- 10%), 50/60 Hz (+/- 3 Hz), 2 A max.

CERTIFICATION

Safety	USA and Canada (CSA certified), EU (LVD and EN 60950-1 compliant), Russia (GOST), Singapore (PSB), China (CCC), Argentina (IRAM), Mexico (NYCE)
Electromagnetic	Compliant with Class B requirements, including: USA (FCC rules), Canada (ICES), EU (EMC Directive), Australia (ACMA), New Zealand (RSM), China (CCC), Japan (VCCI); Certified as Class A product: Korea (KCC)
Environmental	WEEE, EU RoHS, China RoHS, REACH, EuP, FEMP
ENERGY STAR [®] qualified models	See: www.hp.com/go/energystar

WARRANTY

One-year limited hardware warranty

For more information, please visit:

www.hp.com/go/designjetT1300 or www.hp.com/go/simplify

ORDERING INFORMATION

PRODUCT

CR651A	HP Designjet T1300 44-in ePrinter
CR652A	HP Designjet T1300 44-in PostScript ePrinter

ACCESSORIES

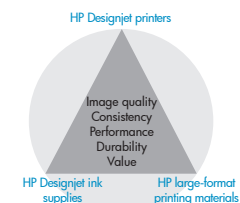
CN500B	HP Designjet PostScript Upgrade
Q6709A	HP Designjet 44-inch Roll Feed Spindle
CQ654A	HP Designjet HD Scanner
CN501A	HP Designjet External Hard Disk
CN454A	SCP reprocontrol for HP (1 printer)
CN455A	SCP reprocontrol for HP (2 printers)
J7961 G	HP Jetdirect 635n IPv6/IPsec Print Server

ORIGINAL HP PRINTHEADS

C9380A	HP 72 Gray and Photo Black Printhead
C9383A	HP 72 Magenta and Cyan Printhead
C9384A	HP 72 Matte Black and Yellow Printhead

ORIGINAL HP INK CARTRIDGES

C9397A	HP 72 69-ml Photo Black Ink Cartridge
C9398A	HP 72 69-ml Cyan Ink Cartridge
C9399A	HP 72 69-ml Magenta Ink Cartridge
C9400A	HP 72 69-ml Yellow Ink Cartridge
C9401A	HP 72 69-ml Gray Ink Cartridge
C9403A	HP 72 130-ml Matte Black Ink Cartridge
C9370A	HP 72 130-ml Photo Black Ink Cartridge
C9371A	HP 72 130-ml Cyan Ink Cartridge
C9372A	HP 72 130-ml Magenta Ink Cartridge
C9373A	HP 72 130-ml Yellow Ink Cartridge
C9374A	HP 72 130-ml Gray Ink Cartridge
CH575A	HP 726 300-ml Matte Black Designjet Ink Cartridge



The HP printing system

HP printers, HP ink formulations and printing supplies, and HP printing materials are designed and engineered to work together as an optimized printing system, providing exceptional print quality and reliability—print after print. HP supplies are exceptionally consistent—providing less downtime and increased productivity.

Try these popular HP media and experience optimum performance from your HP printing system:

ORIGINAL HP LARGE-FORMAT PRINTING MATERIALS

HP Bright White Inkjet Paper	ColorPRO FSC [®] certified	C1860A, C1861A, C6035A, C6036A, C6810A, Q1444A-Q1446A
HP Universal Bond Paper	ColorPRO FSC [®] certified	Q1396A-Q1398A, Q8751A, Q8003A-Q8005A
HP Recycled Bond Paper		CG889A-CG892A
HP Universal Coated Paper	FSC [®] certified	Q1404A-Q1406A
HP Universal Heavyweight Coated Paper	FSC [®] certified	Q1412A-Q1414A
HP Translucent Bond Paper		C3859A, C3860A
HP Vellum Paper		C3861A, C3862A
HP Clear Film		C3875A, C3876A
HP Matte Film		51642A, 51642B
HP Premium Matte Photo Paper		CG459A, CG460A
HP Premium Plus Gloss Photo Paper (Satin)		Q5488A (Q7920A, Q5491A)
HP Universal High-gloss Photo Paper (Semi-gloss)		Q1426A-Q1428A (Q1420A-Q1422A)
HP Everyday Adhesive Matte Polypropylene		CG824A, CG825A, CG843A
HP Coated Paper	PEFC certified	C6019B, C6020B, C6567B, C6980A, Q1414A-Q1443A
HP Heavyweight Coated Paper	PEFC certified	C6029C, C6030C, C6569C, Q1956A

For more HP large-format printing materials and detailed information on sizes and region availability, please visit us online at: www.hp.com/go/lfp/Printing/materials-supplies



FSC[®] certified HP printing materials carry the Forest Stewardship Council (FSC) Mixed Sources label, signifying that these media support the development of responsible forest management worldwide.



The PEFC label demonstrates that certified HP papers come from forests that are managed sustainably.



With the addition of ColorPRO Technology, HP papers provide professional quality and striking results at production speed for high-quality, high-productivity printing of graphics and technical applications.



Keep printing materials out of landfill with HP recyclable media eligible for free return and recycling through the HP Large-format Media take-back program.⁷

SERVICE AND SUPPORT—HP DESIGNJET T1300

HP578E	HP 3 year Next Business Day Hardware Support
HP582E	HP 4 year Next Business Day Hardware Support
HP583E	HP 5 year Next Business Day Hardware Support
HP592PE	HP 1 year Post Warranty, Next Business Day Hardware Support
HP593PE	HP 2 year Post Warranty, Next Business Day Hardware Support
H4518E	HP Network Installation Service

¹ Mechanical printing time. Printed in Fast mode with Economode on, using HP Bright White Inkjet Paper (Bond).

² Mechanical printing time.

³ +/-0.1% of the specified vector length or +/-0.2 mm (whichever greater) at 23°C (73°F), 50-60% relative humidity, on A0/E printing material in Best or Normal mode with HP Matte Film.

⁴ Measured on HP Matte Film.

⁵ Based on 640 MB RAM.

⁶ Included with PostScript printers only.

⁷ HP Large-format Media take-back program availability varies. Some recyclable HP papers can be recycled through commonly available recycling programs. Recycling programs may not exist in your area. See www.hp.com/recycle for details.